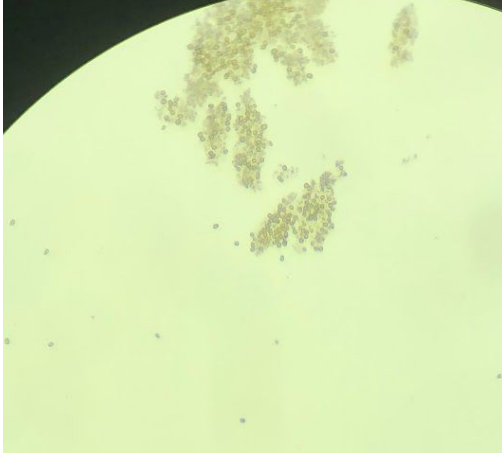
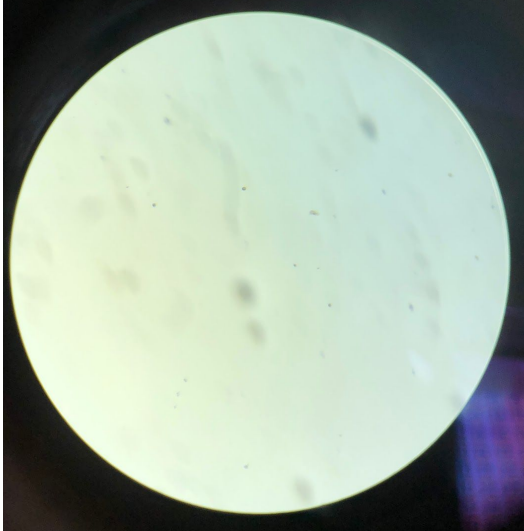
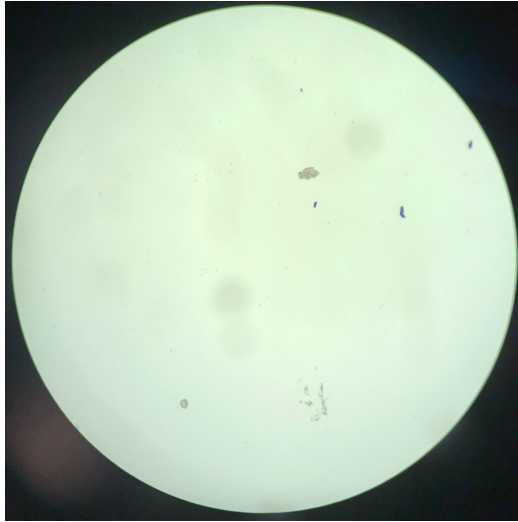


Name: Sijia Qin, Jiazi Tian

Date: 7/16/19

S. Microadriaticum

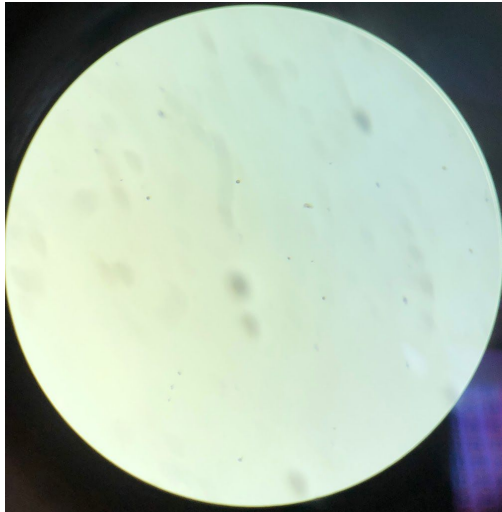
<p>Stock</p> 	<p>The clustered were dead, others were shaking separately.</p>
<p>F2 10 mL</p>	<p>Few algaees were visible.</p>
<p>F2 25 mL</p> 	<p>The majority were circling actively. Only one looked like dead.</p>
<p>F2 75 mL</p>	<p>Only saw a few, lower concentration compared to F2 25mL. All were dead, cannot see anyone moving.</p>



ASP-8A 10 mL

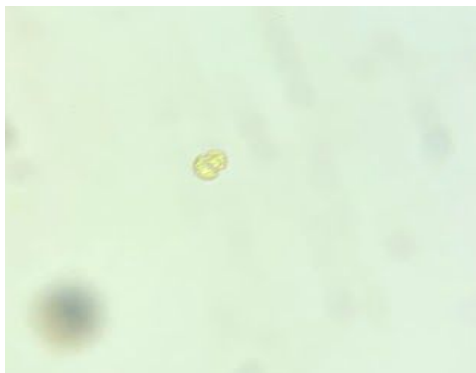
All were circling. Lower concentration compared to F2 25mL.

ASP-8A 25 mL




All were circling actively. Higher concentration compared to ASP-8A 10mL.

ASP-8A 75 mL

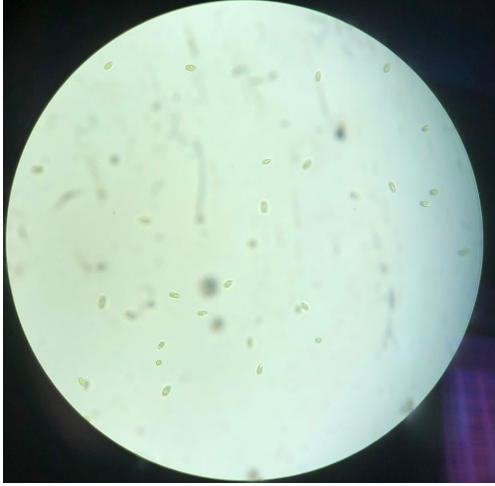
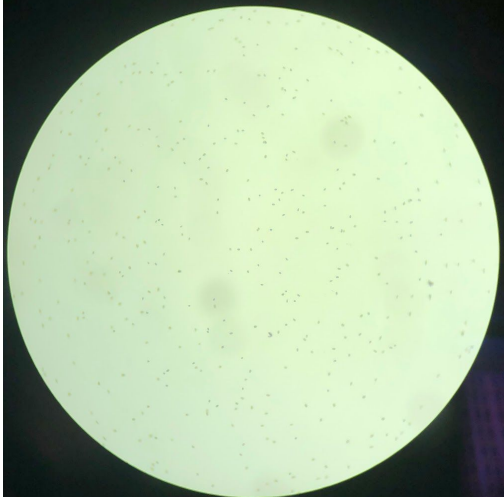


The majority were circling and moving. Same concentration as ASP-8A 25mL..

L1 10 mL	All were nonmoving.
L1 25 mL	All were nonmoving, lower concentration compared to L1 10mL.
L1 75 mL	All were nonmoving.
L1 + F2 10 mL	All were nonmoving.
L1 + F2 25 mL	All were nonmoving. Some clustered like stock samples.
	
L1 + F2 75 mL	Half were swimming, half were nonmoving.
ASP-8A with SW 10 mL	All were nonmoving. Low concentration compared to ASP-8A 10mL.
ASP-8A with SW 25 mL	One was circling, one was dead. Low concentration compared to ASP-8A 10mL
ASP-8A with SW 75 ml	One was swimming. One was circling.

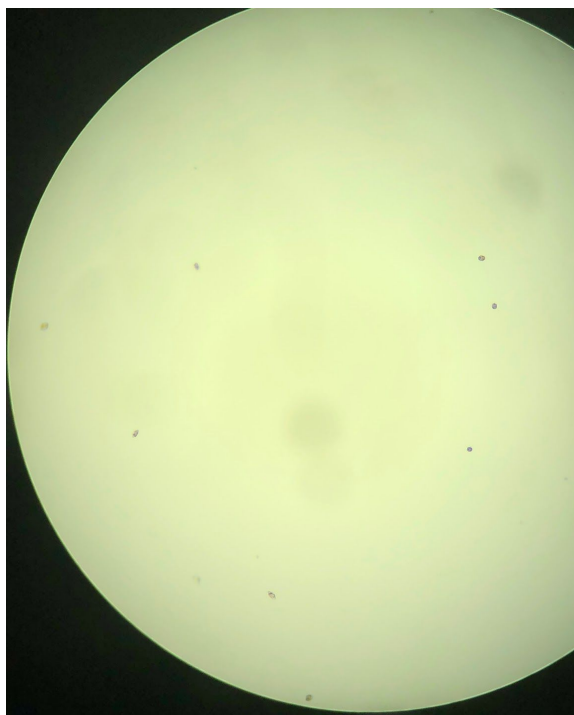
D. Tertiolecta

Stock	1/5 were shaking. 4/5 were swimming actively.
-------	---

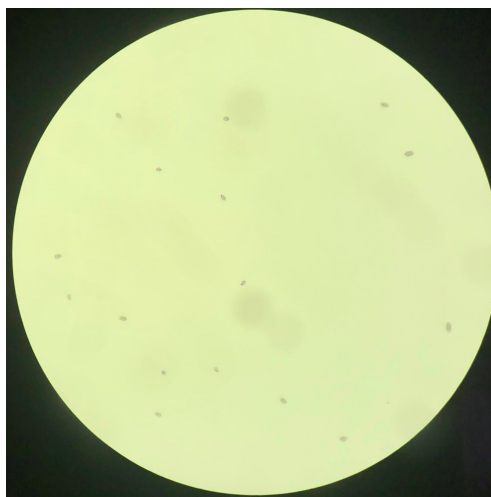
 	
ASP-8A 75 ml New 7/12/19	Half were swimming, half were circling.
ASP-8A with SW 10 mL	Half were swimming actively, half were shaking. Culture was green.
ASP-8A with SW 25 mL	Most were swimming, only some were shaking. Culture was green.
ASP-8A with SW 75 ml	All were swimming.

O. Marina

Stock	All were swimming actively and rapidly. They looked a little purple.
-------	--





F2 10 mL

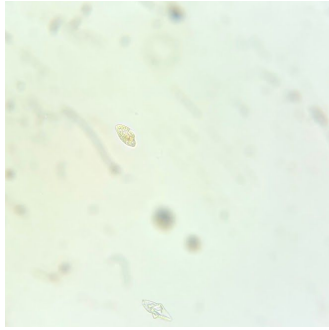


All were swimming. Higher concentration compared to the stock. They looked a little green.

F2 25 mL

All were swimming. Same concentration as the stock.
The picture One was nonmoving, without obvious change of the shape.

	
F2 75 mL	All were swimming. Lower concentration compared to the stock.
ASP-8A 10 mL	All were swimming. Same concentration compared to the stock. They looked a little purple and clear.
ASP-8A 25 mL	All were swimming. Bigger compared to ASP-8A 10mL. They looked green..
<p>ASP-8A 75 mL</p> 	<p>Many O-Marina were swimming actively. D-tertiolecta were swimming and overgrown.</p> <p>Not sure what was in the picture. Looked like D-tertiolecta were eating it. Many went into the center.</p>
ASP-8A with SW 10 mL	Most were swimming. One was nonmoving.
ASP-8A with SW 25 mL	Two were swimming. One were moving slightly. Lower concentration compared to ASP-8A with SW 10 mL.



ASP-8A with SW 75 mL

Baby O-marina were swimming.