
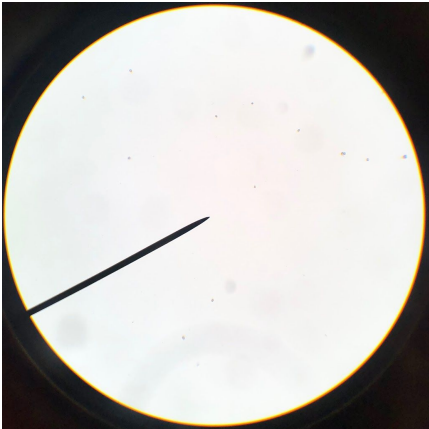


Name: Sijia and Jiazi

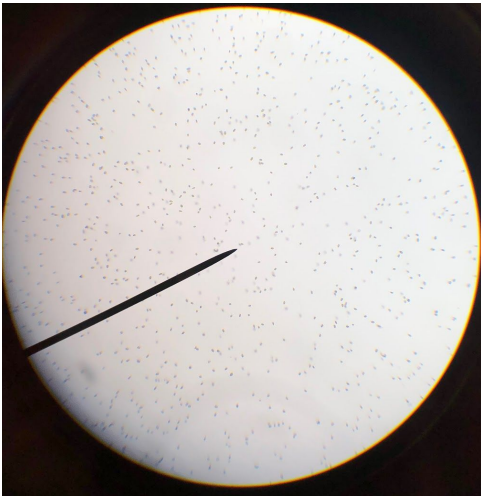
Date: 7/17/19


S. Microadriaticum

|   |  |
|---|--|
| Stock<br>          | Only one part were clustered and dead, others were circling actively.  |
| F2 10 mL  | Some were swimming, some were circling. Very low concentration compared to the stock.  |
| F2 25 mL  | Most were circling. Some were dead. High concentration compared to the F2 10mL, low concentration compared to stock. Their size were very small. |
| F2 75 mL  | All were circling. Same concentration as F2 10mL. Their size were small.   |
| ASP-8A 10 mL  | All were circling. High concentration compared to F2 10mL. Their size were large and small.  |
| ASP-8A 25 mL<br> | All were swimming actively. Almost same concentration as stock.  |
| ASP-8A 75 mL  | Most were circling. Almost same  |

|                      |   |
|----------------------|---|
|                      | concentration as stock.   |
| L1 10 mL             | All were circling. Low concentration compared to stock.                           |
| L1 25 mL             | The clustered were dead. One was circling. Low concentration compared to L1 10mL. |
| L1 75 mL             | Some were circling, some were dead. Low concentration compared to L1 10mL.        |
| L1 + F2 10 mL        | All were circling. Low concentration compared to L1 10mL.                         |
| L1 + F2 25 mL        | Two were swimming normally. One were circling. Cannot see clustered death.        |
| L1 + F2 75 mL        | The babies were circling. The large were dead.                                    |
| ASP-8A with SW 10 mL | All four were non-moving.   |
| ASP-8A with SW 25 mL | All were non-moving. Only saw three.  |
| ASP-8A with SW 75 ml | All were non-moving. Only saw one circling.                                       |

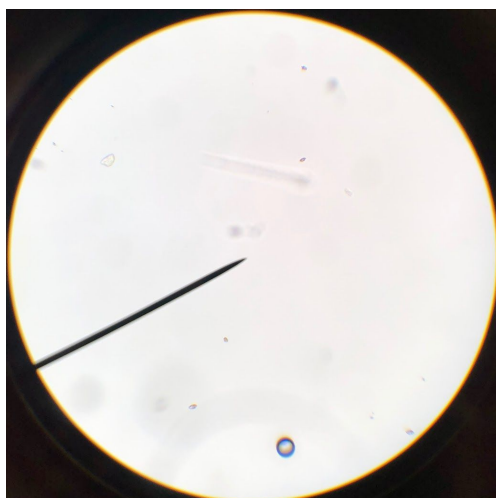
#### D. Tertiolecta

|  |   |
|--|---|
| <p>Stock</p>  | $\frac{1}{5}$ was shaking. The others were swimming.            |
| ASP-8A 75 ml   | All were swimming. Half concentration compared to stock.        |
| ASP-8A with SW 10 mL   | All were swimming actively. High concentration compare to 75ml. |
| ASP-8A with SW 25 mL   | Low concentration compare to 25ml. All                          |

|   |   |
|---|---|
|   | were swimming.  |
| ASP-8A with SW 75 ml<br> | High concentration compare to stock. All were swimming actively. 1/5 was shaking. |

#### O. Marina

|                      |   |
|----------------------|---|
| Stock                | One was spinning. Babies and large ones were swimming actively.   |
| F2 10 mL             | Swimming actively. High concentration compare to stock.   |
| F2 25 mL             | Swimming actively. Low concentration compare to 10ml.   |
| F2 75 mL             | Swimming actively. Low concentration compare compare to 25ml.   |
| ASP-8A 10 mL         | Swimming actively. High concentration compare to F2 75 mL.  |
| ASP-8A 25 mL         | Swimming actively. The same concentration as 10ml.  |
| ASP-8A 75 ml         | Low concentration.<br>Many O-Marina were swimming actively.<br>D-tertiolecta were swimming and overgrown. |
| ASP-8A with SW 10 mL | All were swimming actively.   |



ASP-8A with SW 25 mL

Baby O-Marina were swimming actively.

ASP-8A with SW 75 ml

Baby O-Marina were swimming actively,  
Some D-tertiolecta were swimming.